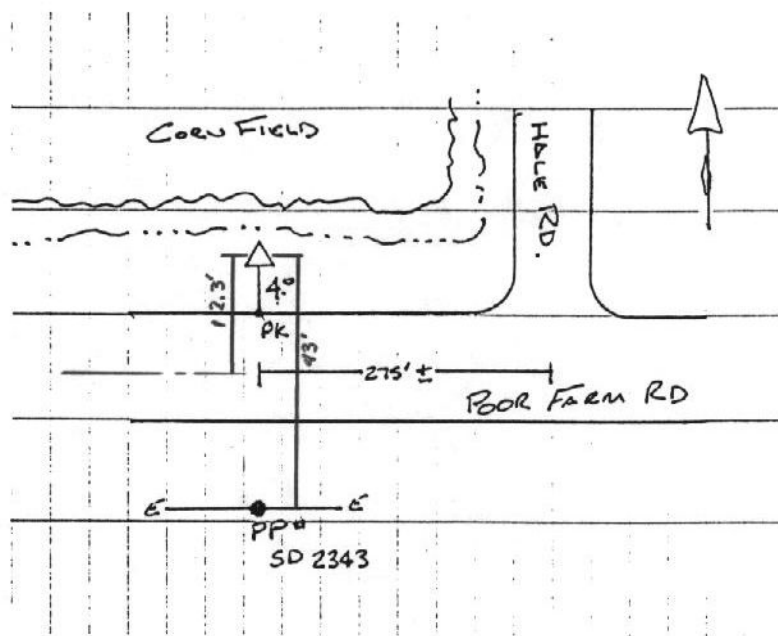


CITY OF MURRAY CONTROL MONUMENT CARD

DESIGNATION: B3 GPS
TYPE: CONCRETE MONUMENT W/ CITY DISK
DATE SET: JUNE 1997 QUAD: DEXTER, KY.
HORIZONTAL DATUM: NAD-83 VERTICAL DATUM: NAVD-88
STATE: KENTUCKY COUNTY: CALLOWAY ZONE: KY. S 1602

NORTHING: 1765060.57 FT
EASTING: 879161.05 FT
ELEVATION: 523.03 FT (GPS)
LATITUDE: N 36°38'49.06026" LONGITUDE: W 088°20'42.30852"
SCALE: CONVERGENCE:
PLANE AZI. TO AZI. MARK:

To Reach: From the intersection of Poor Farm Road and Hale Rd., go west on Poor Farm Road about 275' to the station on the right.



NOT TO SCALE



GRW Aerial Surveys, Inc.
801 Corporate Dr. Lexington Ky. 40503
(606)223-3999